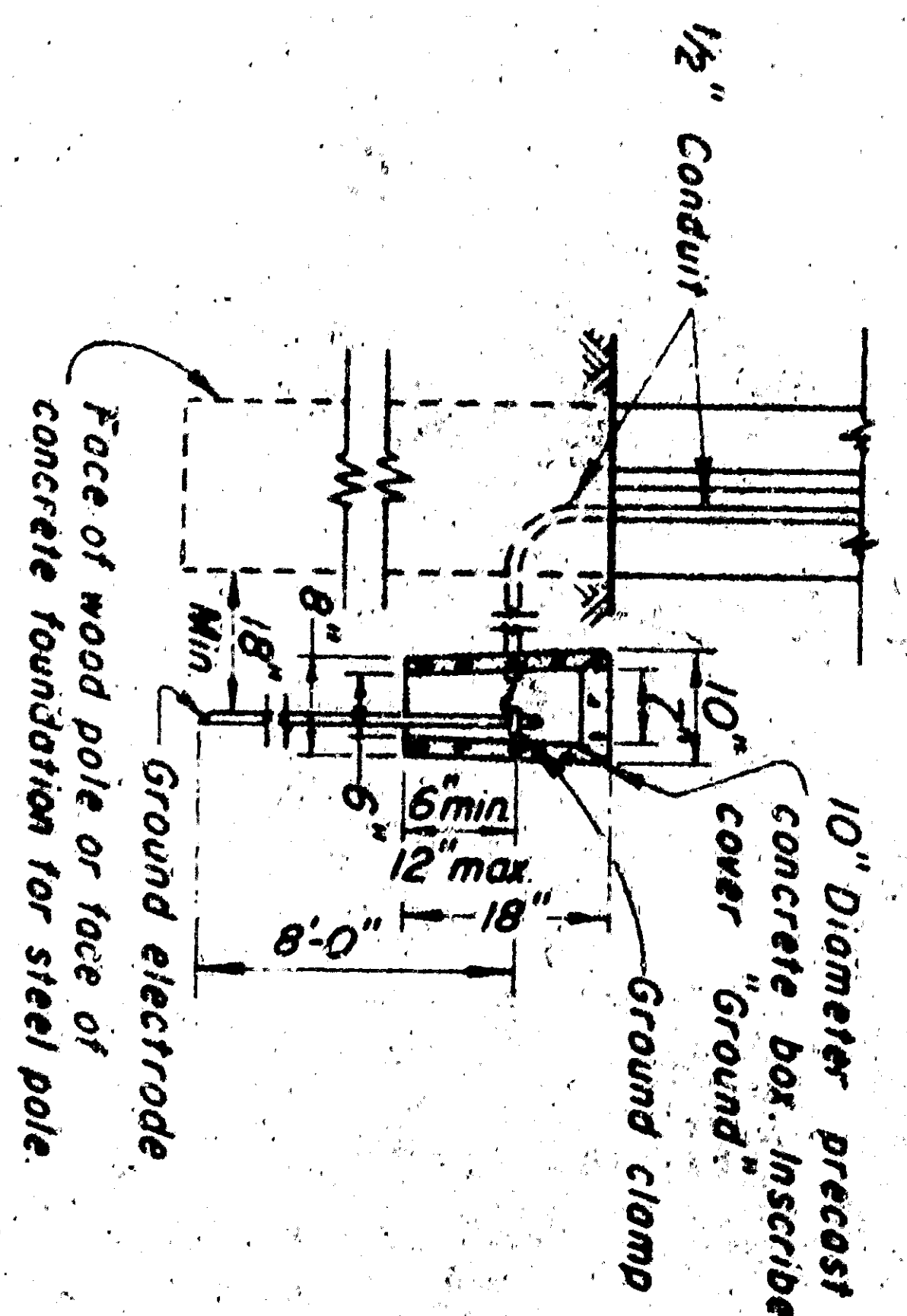
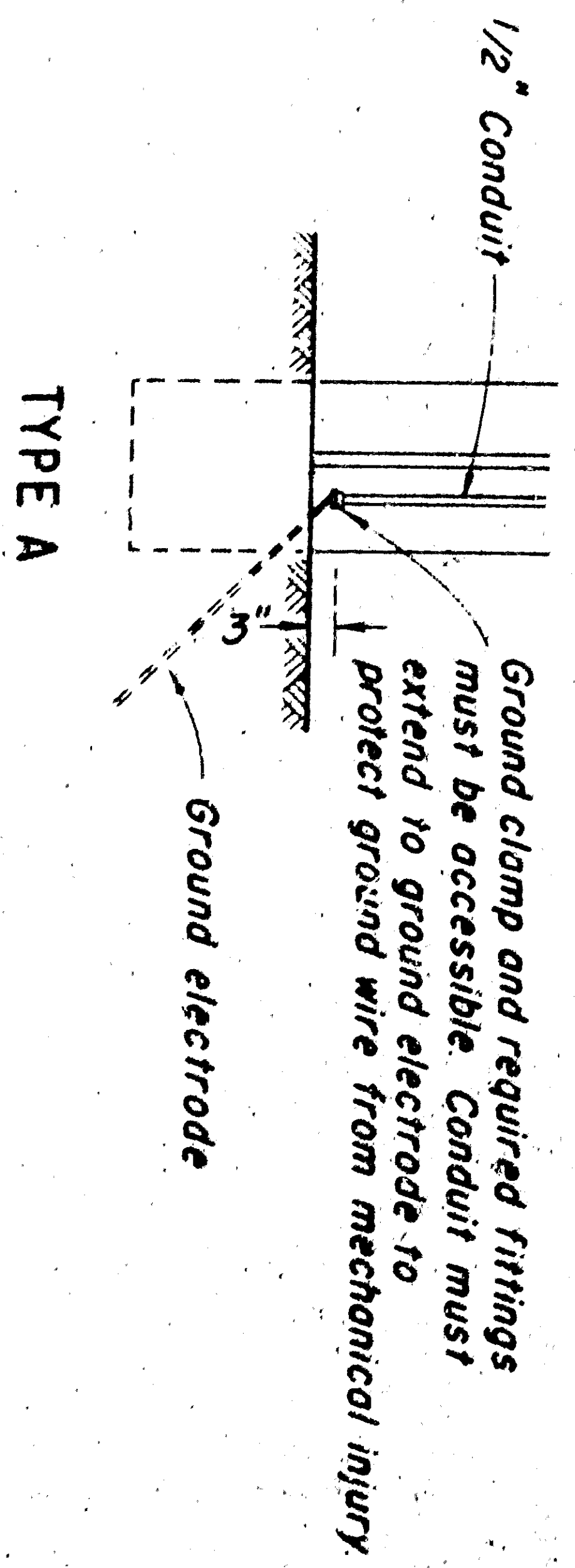


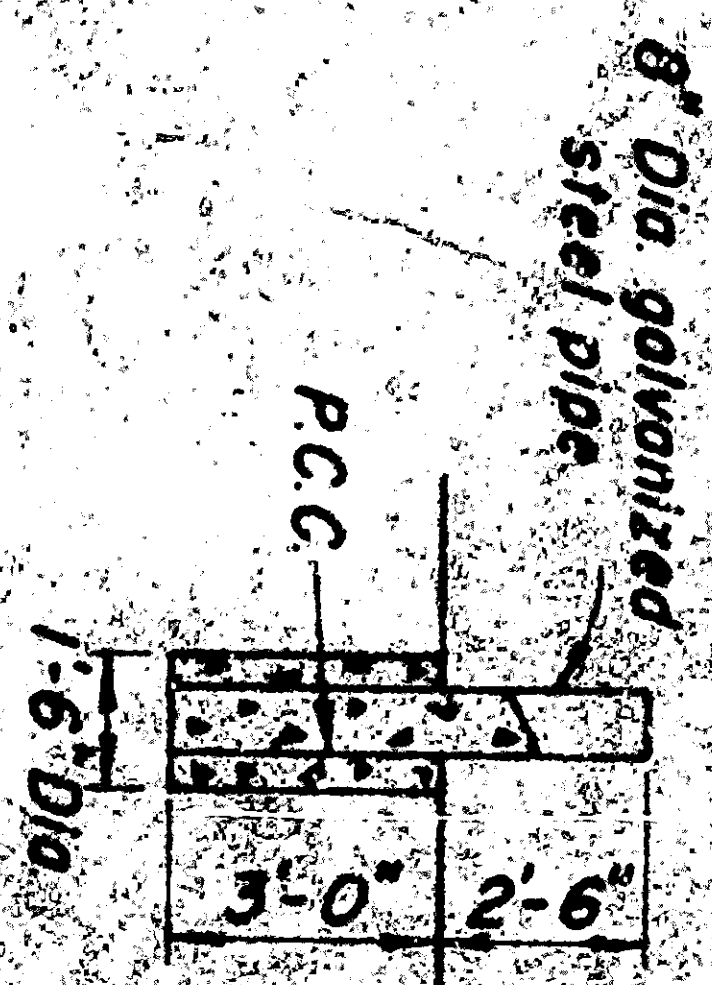
- Notes:
- ① Position of service equipment to be determined by serving utility.
 - ② See "Service Grounding" detail.
 - ③ If service pole is utility owned, service riser shall be furnished by contractor and installed by serving utility. On store owned poles, the service riser shall be furnished and installed by contractor. Service riser conduit shall be terminated with a service head or shall be sealed to prevent the entrance of water, as approved by serving utility.
 - ④ Service switch.
 - ⑤ Flushing beacon control with service switch.
 - ⑥ Meter socket box with either manual circuit closing device or space for test block as specified.

ELECTRICAL AND TELEPHONE SERVICE DETAILS

NO SCALE



Notes:
When meter pipe is used for ground, wire shall be enclosed in galvanized rigid conduit, or equivalent mechanical protection.
Rigid or pipe electrodes shall be driven to a depth of at least 8 ft. below surrounding grade.



GUARD POST

NO SCALE

SERVICE GROUNDING

NO SCALE

STATE OF CALIFORNIA
DEPARTMENT OF PUBLIC WORKS
DIVISION OF HIGHWAYS

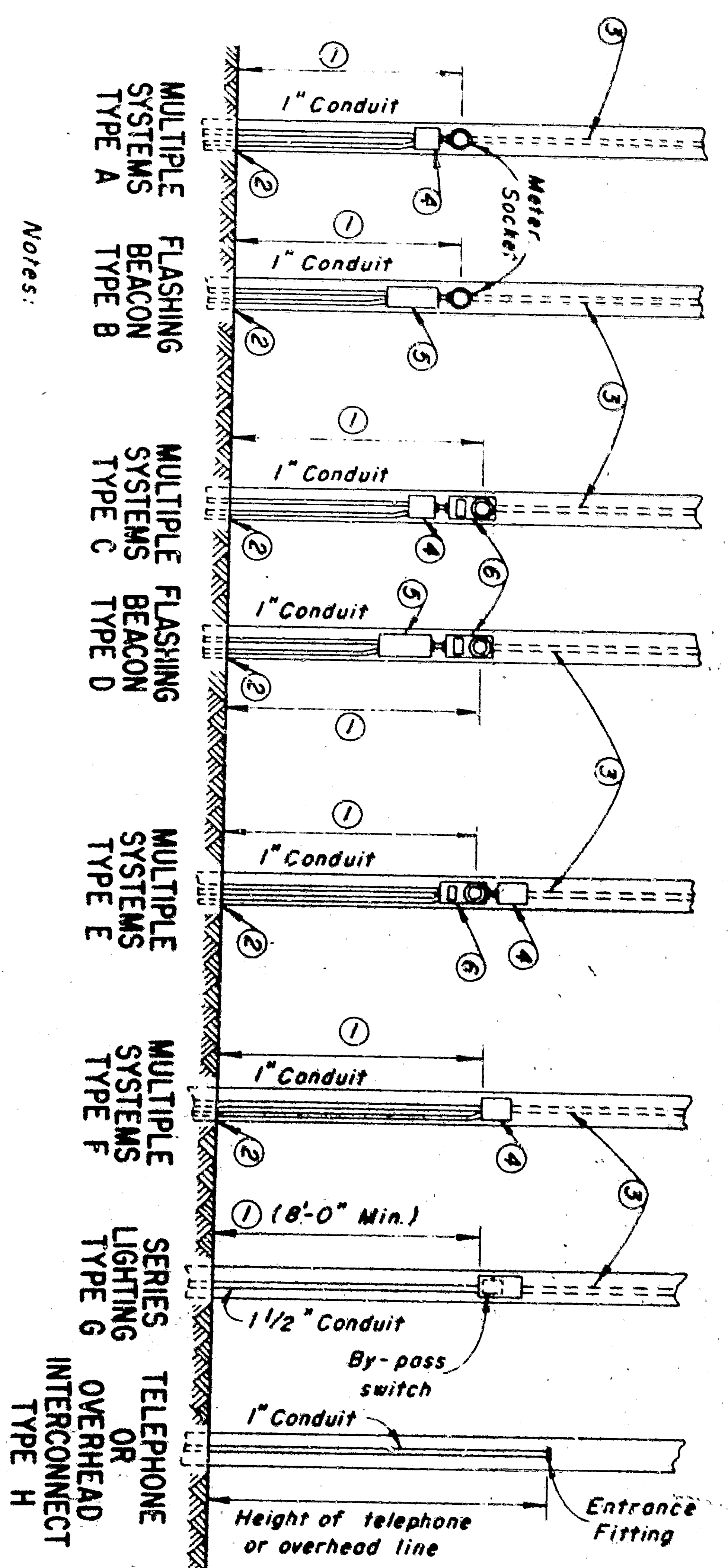
STANDARD DETAILS NO. 1
TRAFFIC SIGNAL AND
HIGHWAY LIGHTING
INSTALLATIONS

SCALE AS NOTED
DRAWING NO. E-

DATE: 11/23/55
SHEET 2 OF 2 SHEETS
ES-1

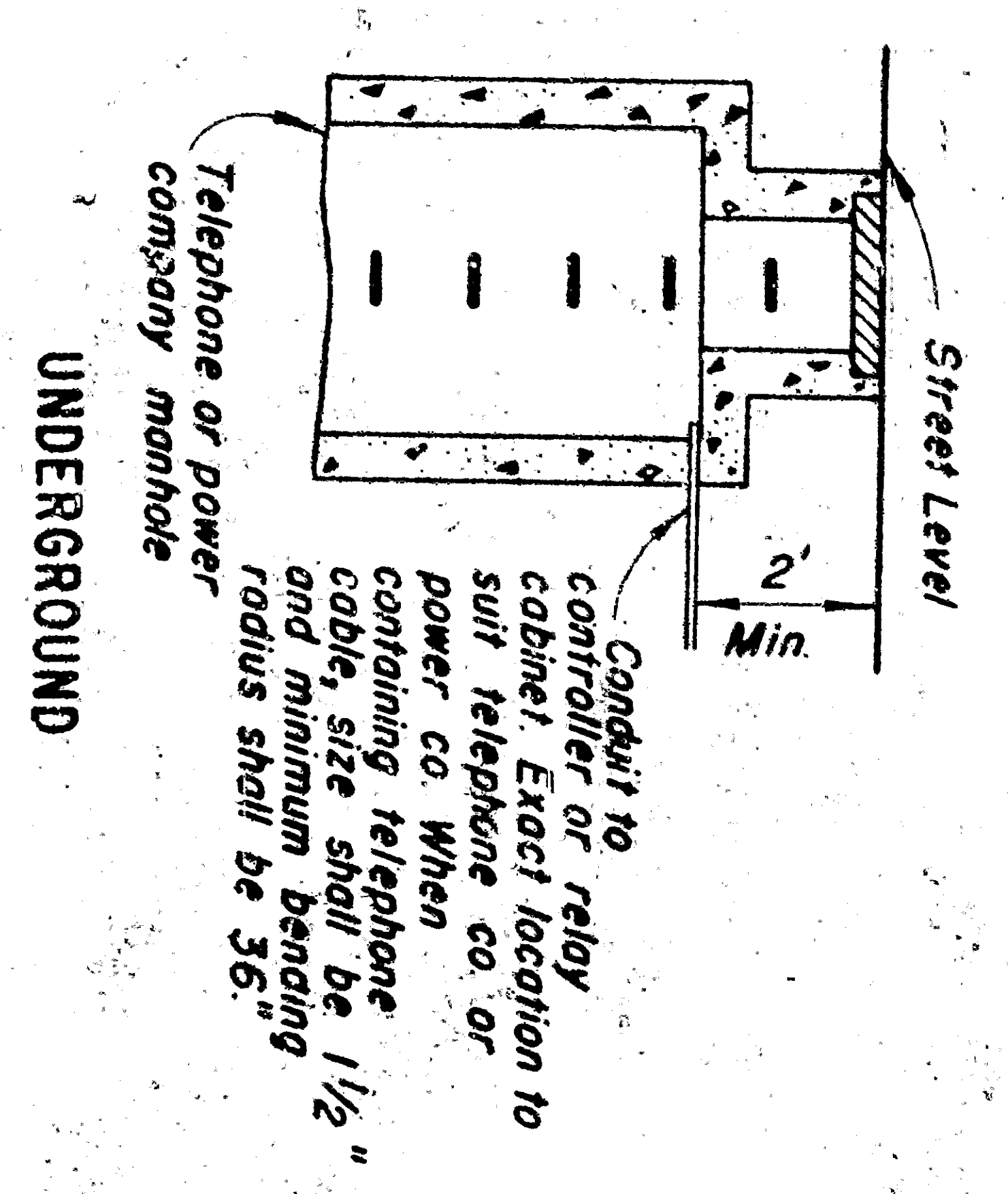
APPROVED: [Signature]
DATE: [Date]
BY: [Signature]
DATE: [Date]

Project Engineer	Date	Design Engineer	Date	Approved	Drawn

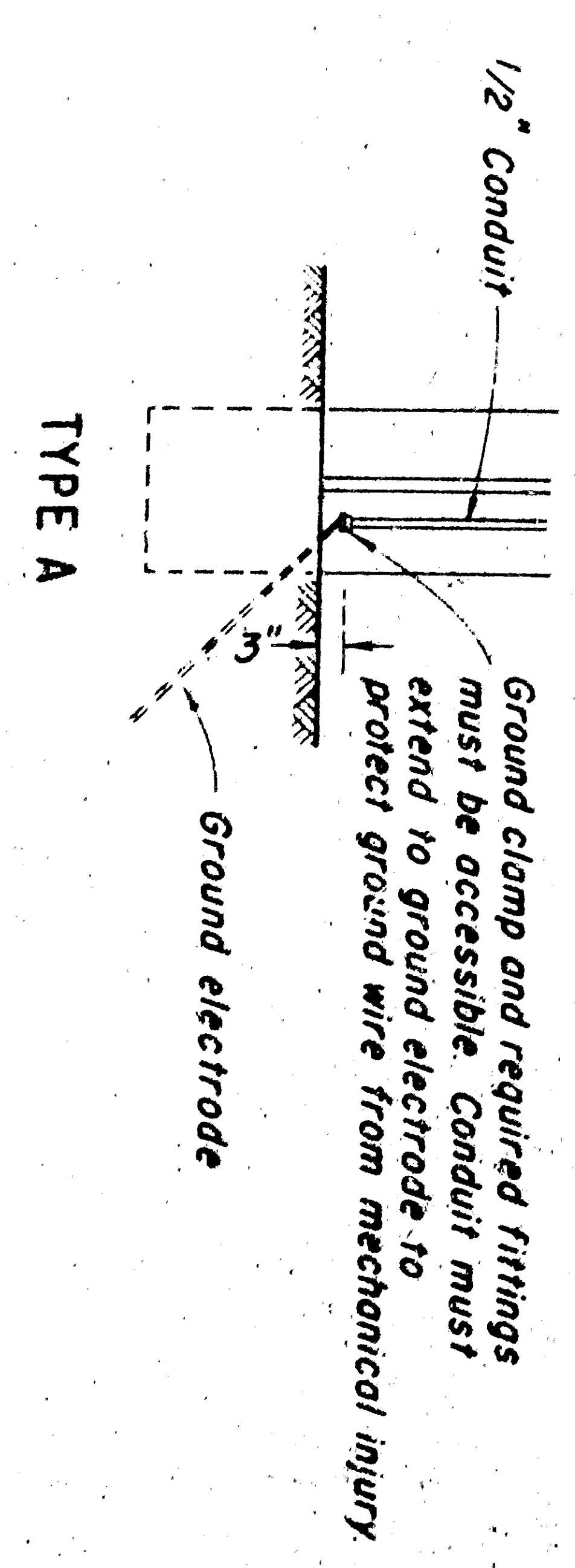


- Notes:
- ① Position of service equipment to be determined by serving utility.
 - ② See "Service Grounding" detail.
 - ③ If service pole is utility owned, service riser shall be furnished by contractor and installed by serving utility. On store owned poles, the service riser shall be furnished with a service head or shall be sealed to prevent the entrance of water, as approved by serving utility.
 - ④ Service switch.
 - ⑤ Flushing beacon control with service switch.
 - ⑥ Meter socket box with either manual circuit closing device or space for test block as specified.

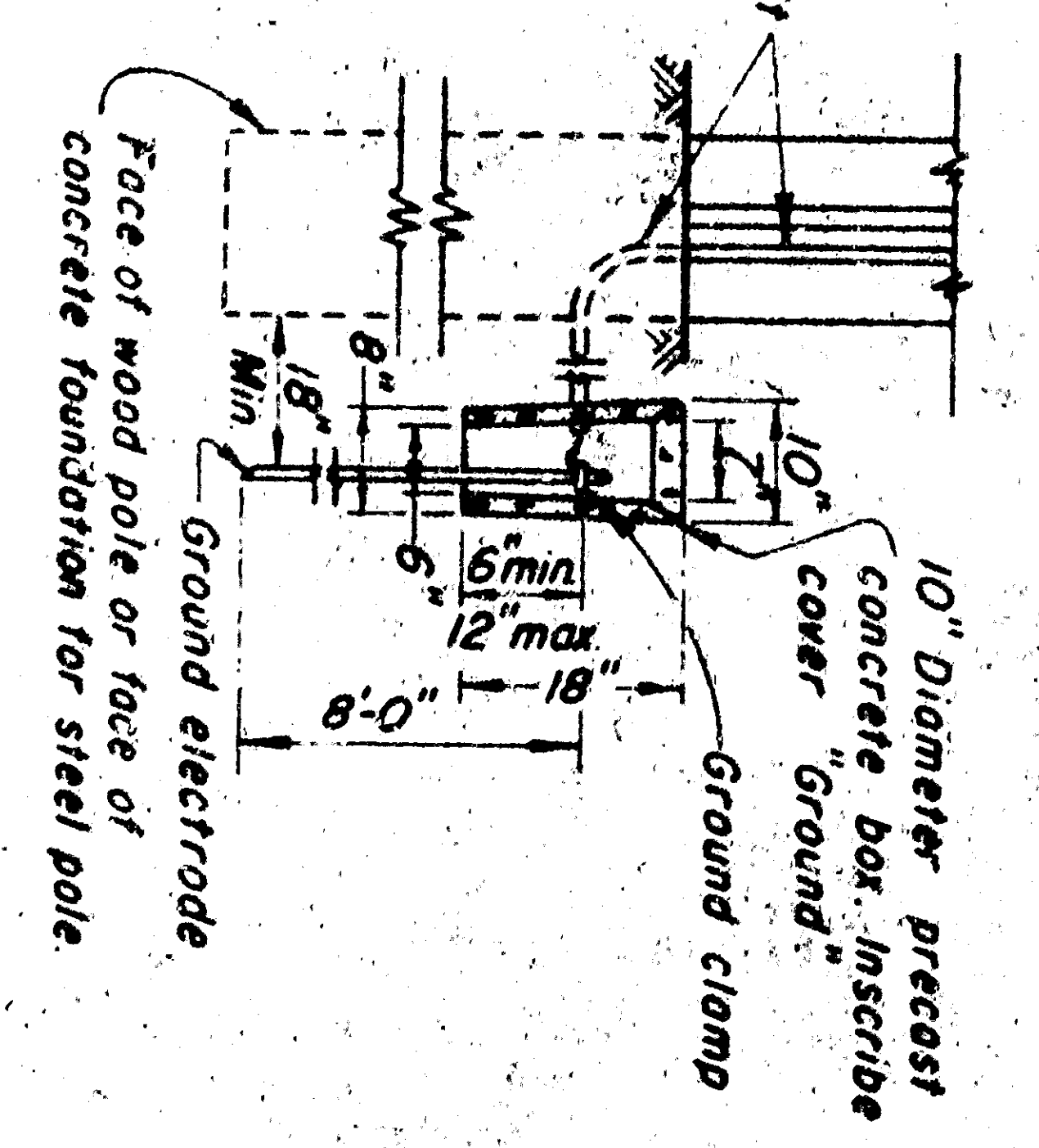
ELECTRICAL AND TELEPHONE SERVICE DETAILS
NO SCALE



UNDERGROUND



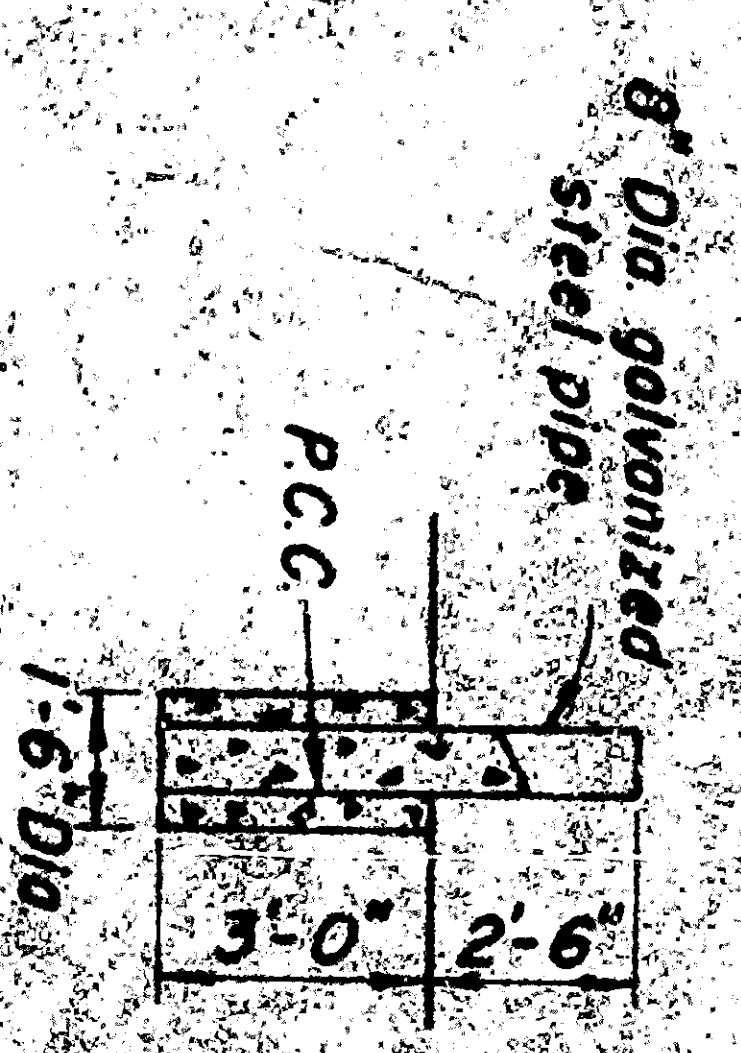
TYPE A



TYPE B

(Install in sidewalk or paved area)

Notes:
When meter pipe is used for ground wire shall be enclosed in galvanized rigid conduit, or equivalent mechanical protection.
Rigid or pipe enclosures shall be driven to a depth of at least 8 ft below surrounding grade.



GUARD POST
NO SCALE

SERVICE GROUNDING
NO SCALE

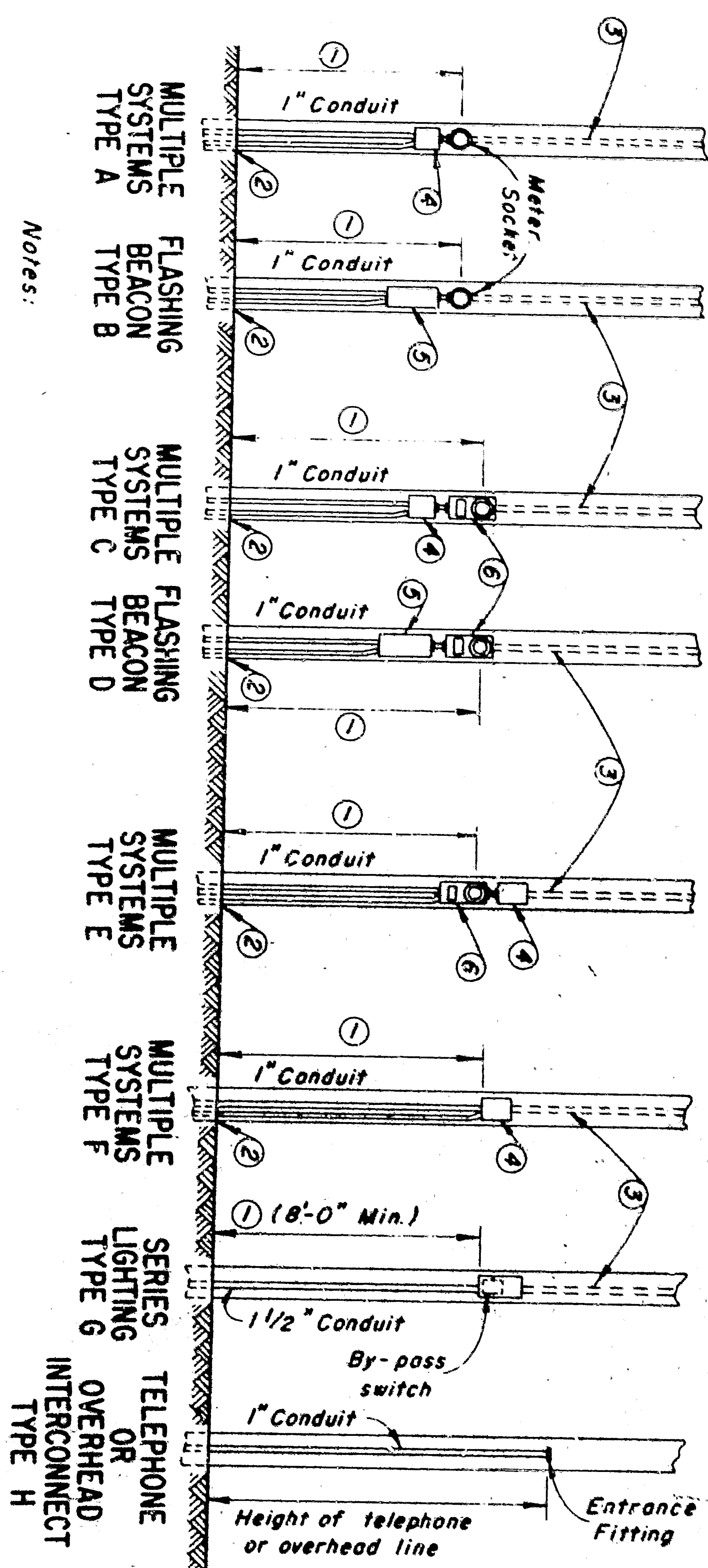
DATE	REVISION

APPROVED: _____
 TITLE: _____
 DEPARTMENT: _____

CD ACCOUNTING PLANS BATS

STATE OF CALIFORNIA DEPARTMENT OF PUBLIC WORKS DIVISION OF HIGHWAYS
STANDARD DETAILS NO. 1
TRAFFIC SIGNAL AND HIGHWAY LIGHTING INSTALLATIONS
SCALE AS NOTED
DRAWING NO. E- _____
REVISED

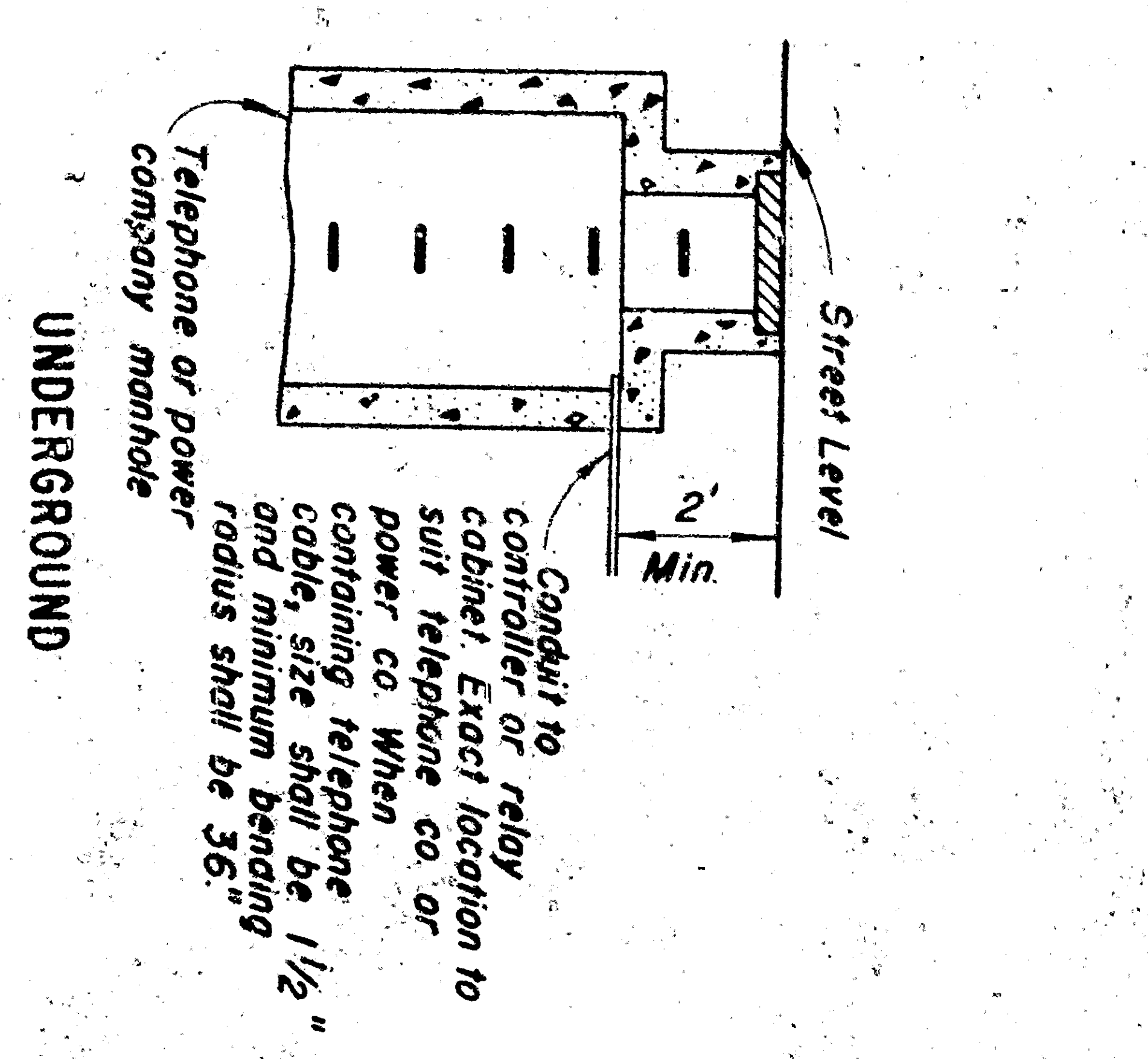
Des. No. 32278 Sheet 2 of 2 Sheets ES-1



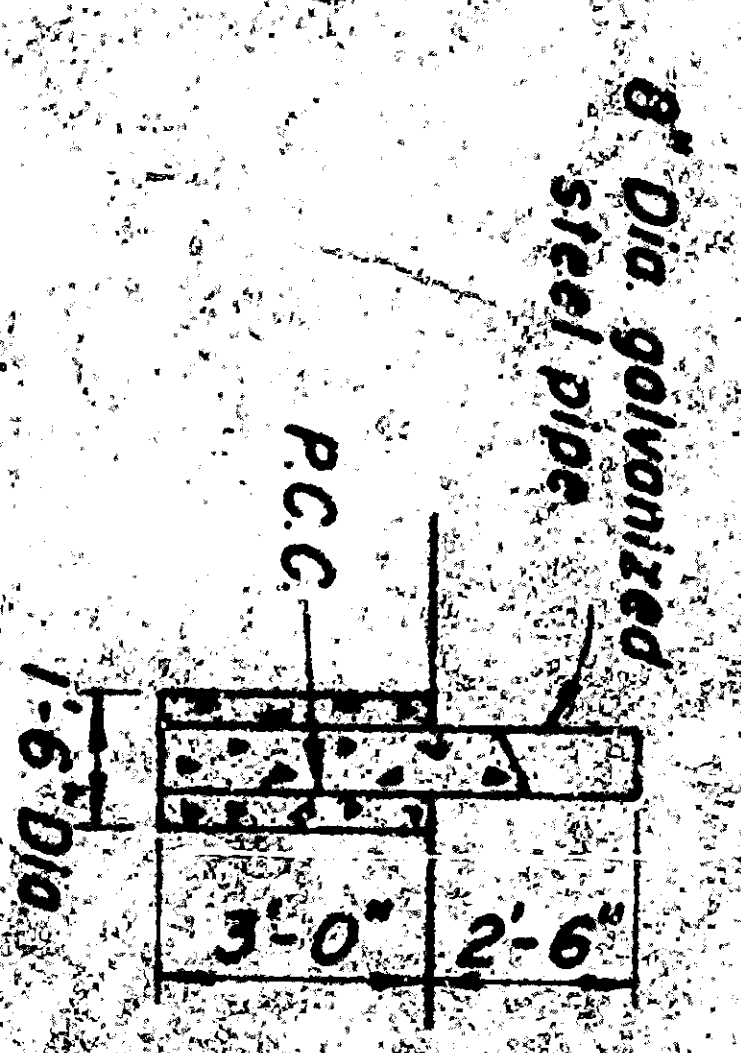
- Notes:
- ① Position of service equipment to be determined by serving utility.
 - ② See "Service Grounding" detail.
 - ③ If service pole is utility owned, service riser shall be furnished by contractor and installed by serving utility. On store owned poles, the service riser shall be furnished and installed by contractor. Service riser conduit shall be terminated with a service head or shall be sealed to prevent the entrance of water, as approved by serving utility.
 - ④ Service switch.
 - ⑤ Flushing beacon control with service switch.
 - ⑥ Meter socket box with either manual circuit closing device or space for test block as specified.

ELECTRICAL AND TELEPHONE SERVICE DETAILS

NO SCALE

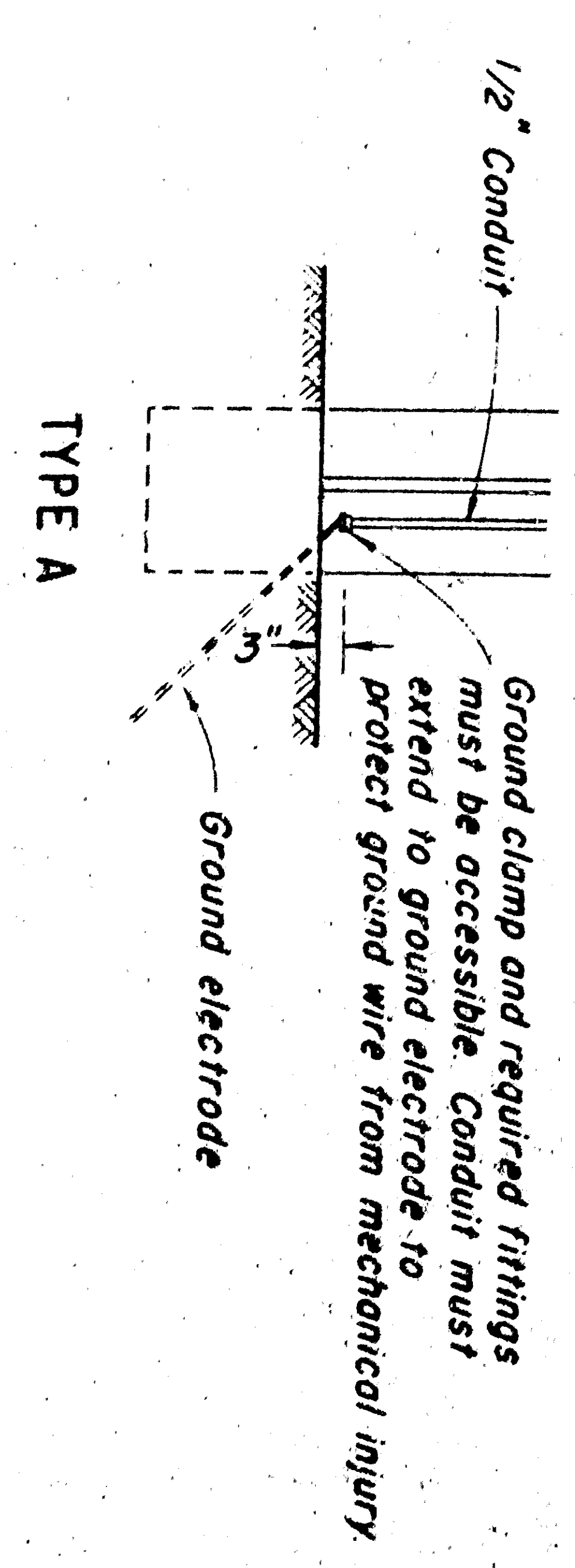


UNDERGROUND

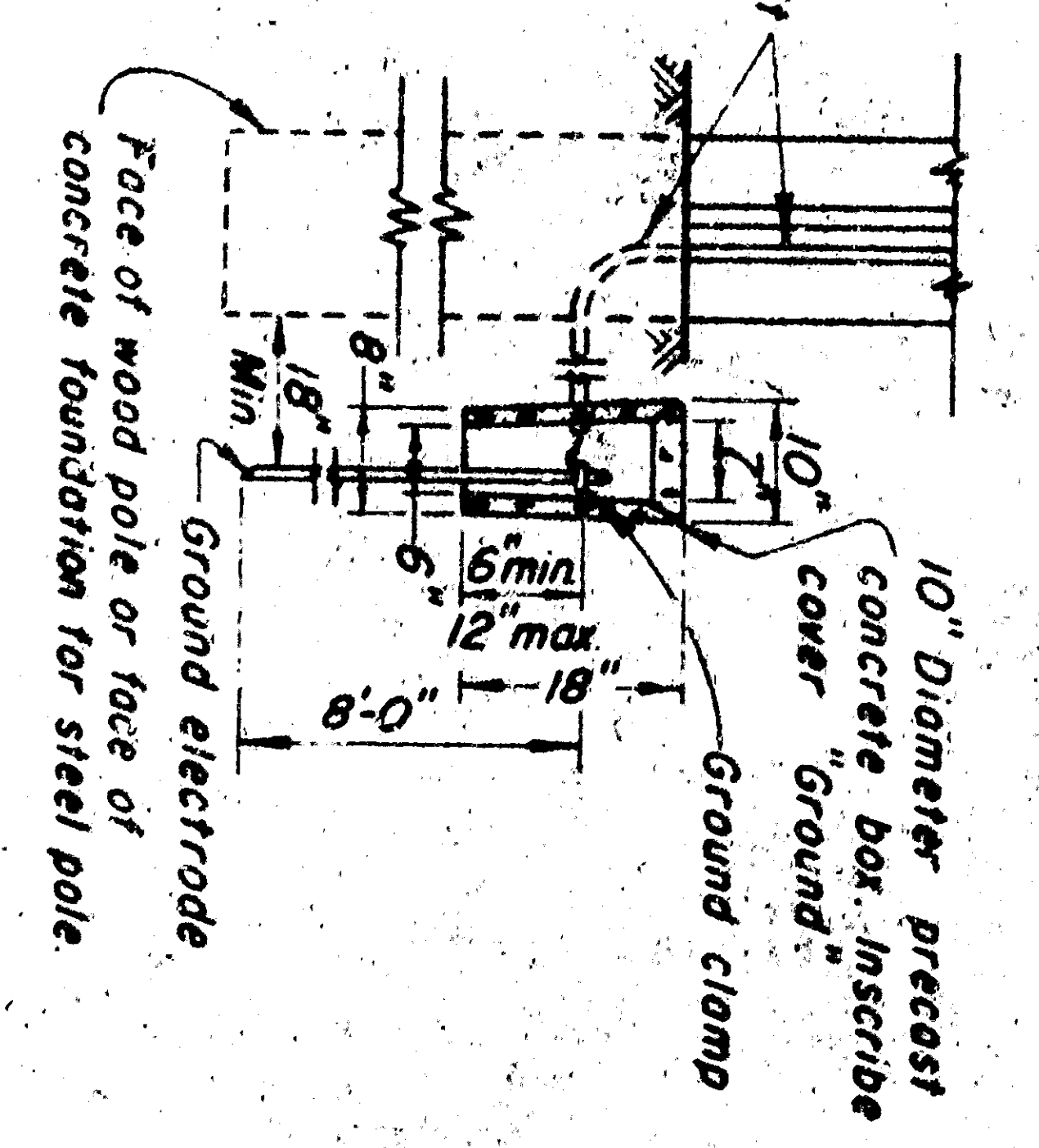


GUARD POST

NO SCALE



TYPE A



TYPE B

(Install in sidewalk or paved area)

Notes:
When meter pipe is used for ground wire shall be enclosed in galvanized rigid conduit, or equivalent mechanical protection.
Rigid or pipe enclosures shall be drawn to a depth of at least 8 ft. below surrounding grade.

SERVICE GROUNDING

NO SCALE

APPROVED

DATE: _____

BY: _____

CD ACCOUNTING PLANS BARTS

STATE OF CALIFORNIA
DEPARTMENT OF PUBLIC WORKS
DIVISION OF HIGHWAYS

STANDARD DETAILS NO. 1
TRAFFIC SIGNAL AND
HIGHWAY LIGHTING
INSTALLATIONS

SCALE AS NOTED DRAWING NO. E-
REVISED

Aug. 19, 1927, Sheet 2 of 2 Sheets E.S. 1